



# How RWE can inform the drug discovery process

## Johan Liwing

Director RWE Market Access Partnerships  
Global Commercial Strategy Organization  
Janssen Pharmaceutical Companies of J&J  
Budapest March 17, 2016

Dorethey Gorham, *Day of the Armada*  
Dorethey is a joyful, self-taught  
artist living with arthritis, general  
anxiety syndrome, and diabetes.



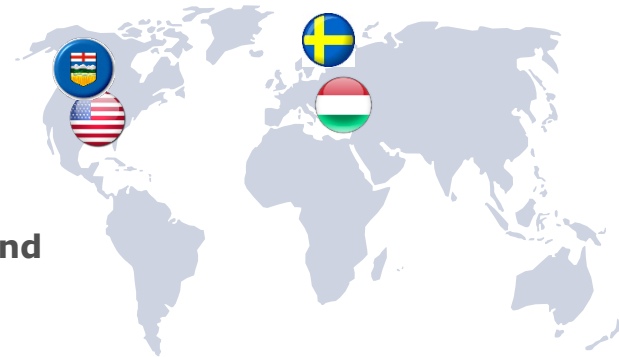
# Janssen's Global Real World Evidence Network

**Real World Evidence research can uncover outcomes, unmet needs and clues for current therapies and future medical breakthroughs**

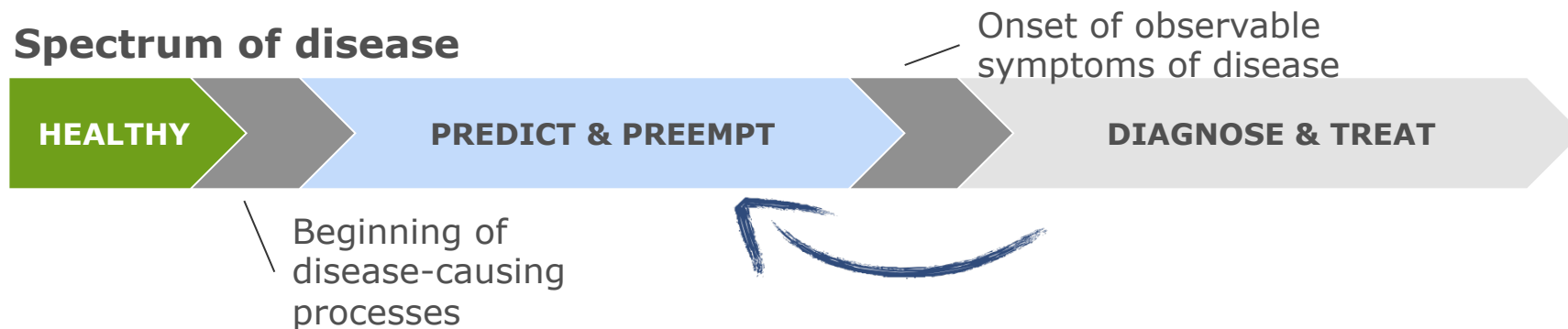
**Janssen** is partnering with top institutions worldwide to accelerate this new line of research.

Our network aims to:

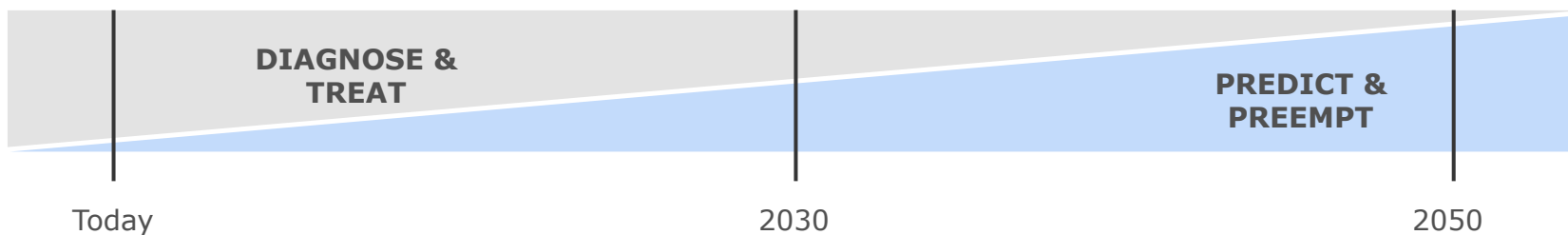
- Generate evidence about **disease pathways, healthcare delivery and the effects of medical interventions**
- Apply scientific **best practices** and advance **methodologies**
- Support **medical decisions**
- Analyze **multiple sources of data** from multiple stakeholders



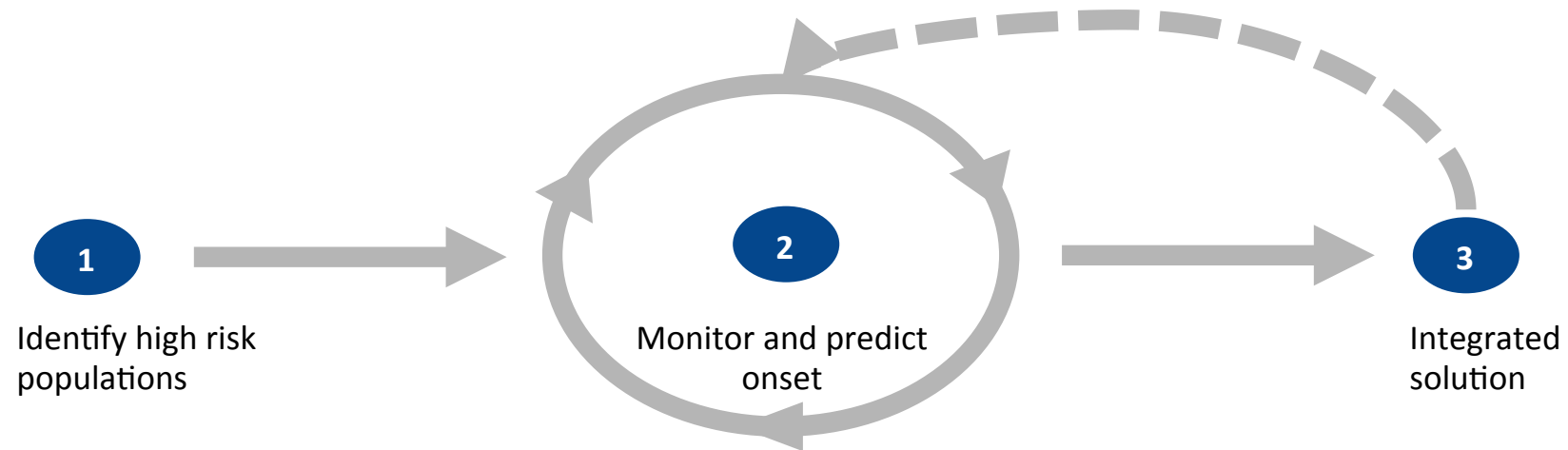
# Disease Interception is a paradigm shift



**Rate of paradigm conversion**



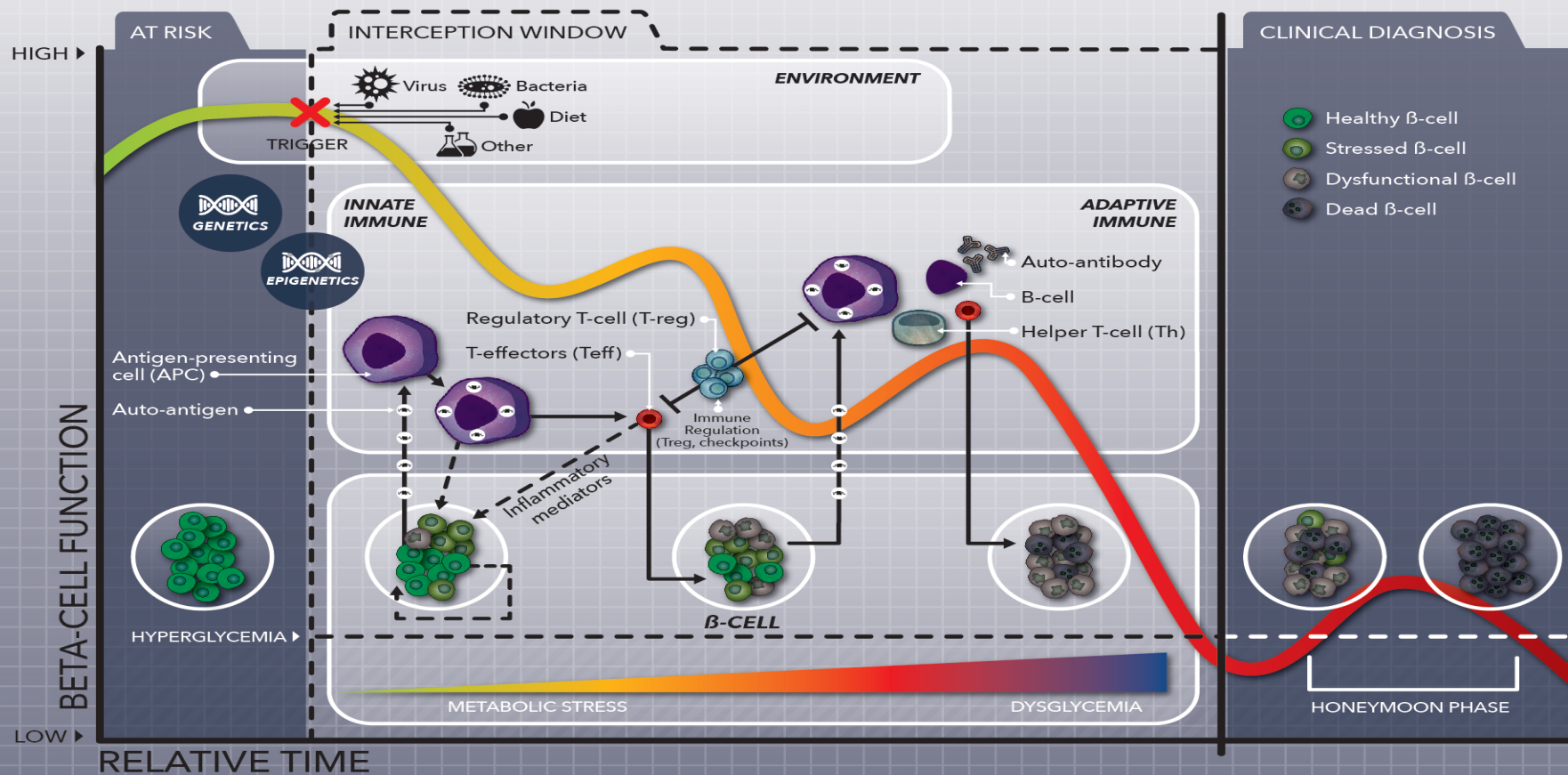
# A Generalized Disease Interception Model



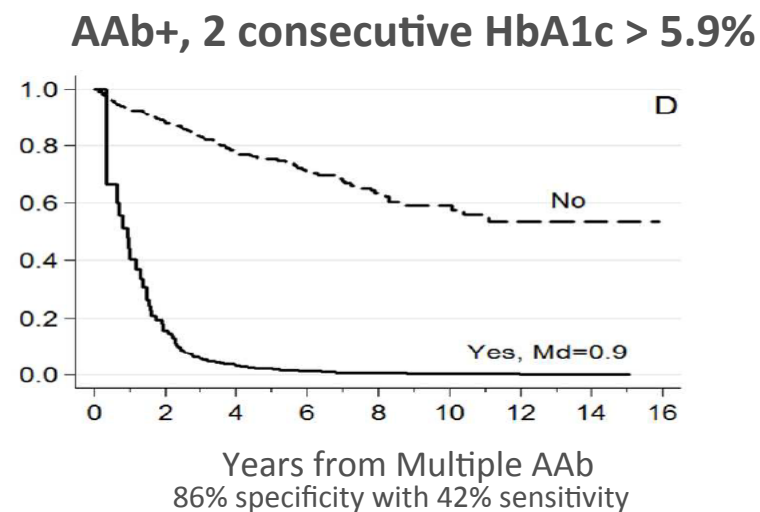
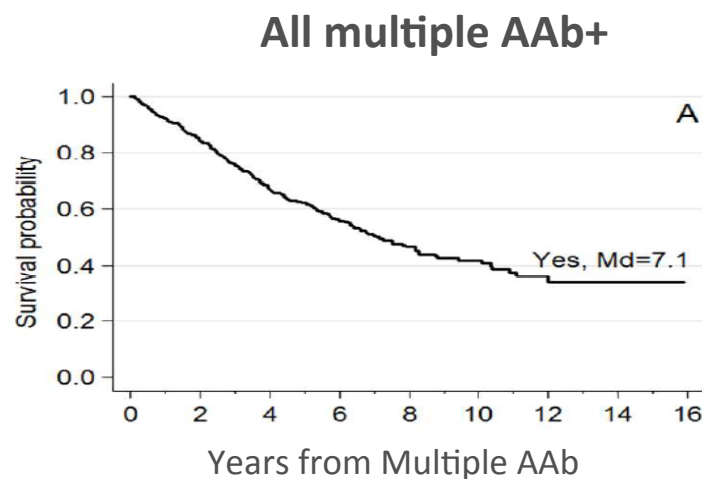
"One day, we will know to what diseases we are susceptible; society will demand data-based interventions."

New York Times, FEB. 8, 2014

# Type 1 diabetes progression



## Multiple AAb in combination with increases in HbA1c Predicts progression to Insulin Dependence



[HbA1c Predicts Time to Diagnosis of Type 1 Diabetes in Children at Risk.](#) Helminen O, Aspholm S, Pokka T, Hautakangas MR, Haatanen N, Lempainen J, Ilonen J, Simell O, Knip M, Veijola R. Diabetes. 2015 May;64(5):1719-27.

## Summary

- We believe in open and transparent collaboration in areas of common interest

In the (near) future

- Drug discovery will be heavily informed by the insights generated by real word data
- Society/patients will demand data-based interventions